



NAKAYOSHI GAKKO
FRIENDSHIP SCHOOL

20th ANNIVERSARY
1999-2019

NEW FAMILY ORIENTATION

May 7, 2019

WELCOME NEW FAMILIES!

- ❖ Introduction to Nakayoshi Gakko
- ❖ Classroom Work Days Overview
- ❖ Committee Overview
- ❖ Maintenance I & Maintenance II Overview
- ❖ MVBT Obon Volunteer Shifts Overview
- ❖ Daily Schedule
- ❖ Facility Tour



NAKAYOSHI GAKKO

Nakayoshi Gakko, or "Friendship School" is a two week summer program where children in grades 1st through 8th learn about Japanese culture and tradition.

Nakayoshi Gakko provides an opportunity for the children and parents to explore the many aspects of the Japanese-American heritage

CLASSROOM WORK DAYS

- ❖ Check in by 8:15am
- ❖ Report to assigned classroom
- ❖ Bring a lunch!

- ❖ Remember: You are here for the students
 - ❖ Pay attention
 - ❖ Engage with them
 - ❖ Help/Support as needed
 - ❖ No cell phones, please



CLASSROOM WORK DAYS

- ❖ Stay with your class all day!
 - ❖ If not needed in the morning, check in at the Office for additional tasks
 - ❖ In the afternoon, you'll go with them to their Specialty classes
- ❖ Shift ends at 4:15pm
 - ❖ All children should either have been picked up or escorted to Extended Care

OVERVIEW OF COMMITTEES

- ❖ Arts & Crafts
 - ❖ Prepare materials for classroom projects & special events
- ❖ Open House
 - ❖ Set up chairs, tables & art displays
 - ❖ Organize dessert potluck & drinks
 - ❖ Serving dinner to attendees
 - ❖ Clean up

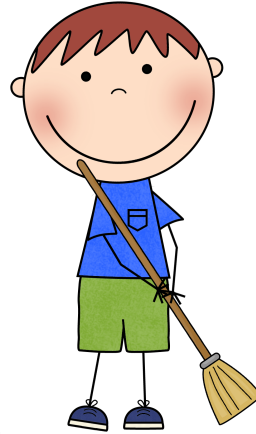


OVERVIEW OF COMMITTEES

❖ Publications

- ❖ Take digital photographs of classes & activities
- ❖ Produce classroom folders & nametags
- ❖ Create art labels
- ❖ Photocopy language & music books
- ❖ Produce Memory Slideshow
- ❖ Video Open House Program

MAINTENANCE DAYS (I & II)



- ❖ Maintenance I: Sat - June 15th (9am)
- ❖ Maintenance II: Sat - June 29th (9am)

- ❖ List of family assignments will be made available
- ❖ Clean-up & set up classrooms, kitchen, gym & facilities

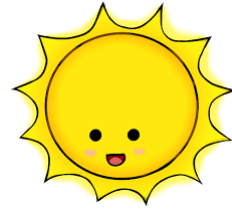
- ❖ Alternative:
Chicken Cleaning (Wed, May 15th from 6:00-8:30pm)

MVBT OBON VOLUNTEER SHIFTS

- ❖ July 20th & 21st, 2019
- ❖ Show appreciation to MVBT for use of temple grounds
- ❖ Each family works a 2½ hour bingo booth shift
 - ❖ Set-up, announcer, caller, table runner, prize runner
- ❖ Email will be sent out in June with a link to sign up for a shift online



SCHEDULE | MORNING



- ❖ Sign-in sheets in gym lobby
- ❖ Pick up your child's name tag
- ❖ Drop off Lunches & Morning Snacks
 - ❖ Separate bags for lunch & snack
 - ❖ Place in classroom bins
 - ❖ Clearly label all items!
- ❖ Walk your child to his/her classroom
 - ❖ Water bottles are taken to the classroom

SCHEDULE | AFTERNOON

- ❖ Specialty Classes
- ❖ Afternoon Demonstrations (starts @ 3:15pm)
 - ❖ Schedule will be made available
 - ❖ Family is welcome to observe!
- ❖ Students return to class & released at 4pm
 - ❖ Do not pick up student directly from gym
 - ❖ Sign-out student from classroom
 - ❖ Give name badges to Sempai
 - ❖ Pick up lunch & snack containers in gym lobby
 - ❖ Pick up food if they had cooking that day



SCHEDULE | AFTERNOON

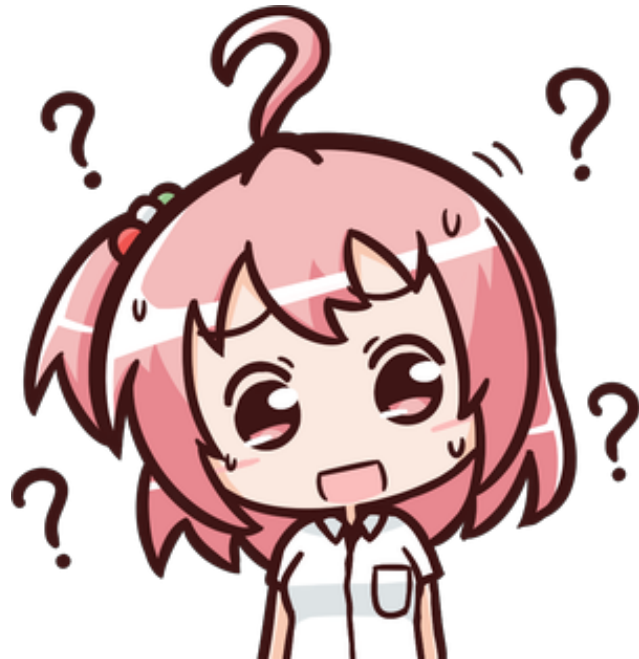
❖ Extended Care Students

- ❖ Escorted from classroom to the gym after 4pm
- ❖ Pick up is by 5:30pm

PLEASE NOTE:

- ❖ 5 minute grace period
- ❖ \$5 for every 5 minutes late after 5:35pm

ANY QUESTIONS?



NO? GOOD!



TOUR TIME!



NAKAYOSHI GAKKO
FRIENDSHIP SCHOOL

20th ANNIVERSARY
1999-2019

ORIENTATION

May 7, 2019

WELCOME ALL FAMILIES!

- ❖ ~~~ 20th Year of Nakayoshi Gakko! ~~~
- ❖ 116 Students
 - ❖ There are still spots available in Panda (1st), Saru (2nd), Zou (4th) and Tsuru (8th)!
- ❖ Introductions
 - ❖ Board Members
 - ❖ Faculty
 - ❖ Sempai
- ❖ Other Information



INTROS | BOARD MEMBERS

Co-Presidents	Julie Uyekubo & Christine Fradenburg
Secretary	Jenny Inouye & Annie Kondo
Treasurers	Grace Kosakura & Cindy Hiroshige
Registrars	Lauren Uyeda & Miyuki Newhall
Special Events	Michelle Lim & Coline LaConte
Purchasing	Curt Matsushima & Colleen Duazo
Facilities	Norm Higa & Michiko Wang
Webmaster	Barry Tao
Ex-Officio	Yumi Higa

INTROS | FACULTY & STAFF

❖ Principal: Joanne Endo

❖ Classroom Sensei >>>



Panda (1st)	Annette Lowe
Saru (2nd)	Marilyn Armistead
Kuma (3rd)	Cindy Ando
Zou (4th)	Aiko Hatakeyama
Kirin (5th)	Satomi Fujikawa
Tora (6th)	Ann Chavez
Ryu (7th)	Tiara Wirkkala
Tsuru (8th)	Brian Tamekuni

INTROS | FACULTY & STAFF



❖ Specialty Sensei

Language	Miho Poelman (Lower) Lisa Nakamatsu (Upper)
Cooking	Cathy Nakamura (Lower) Irene Nishimoto (Upper)
Taiko	Hayley Arima
Origami	Cheryl Uyehara-Shay
Sumi-e	Hiroko Frederick

Undokai	Jaimie Nishimoto
Music	Brigitte Doss-Johnson
Soroban	Joy Tanaka
Anime	Zitallyc Bazan

JUST WANT TO TAKE A MOMENT

To say

THANK YOU!

To our AMAZING staff on
Teacher Appreciation Day!



INTROS | SEMPAI

- ❖ Once again, an outstanding group of Sempai for this year!
- ❖ Head Sempai: Evan Tsukahara
- ❖ Assistant Head Sempai:
 - ❖ Josef Sueoka
 - ❖ Kalyn Wong



INTROS | SEMPAI

Panda (1st)	Vanessa Higa
Saru (2nd)	Caitlyn Higa & Mitchell Kita
Kuma (3rd)	Kylie Mukoyama & Rina Mok
Zou (4th)	Taylor Yee
Kirin (5th)	Kelli Kosakura & Chloe Lim
Tora (6th)	Connor Alicaya & Stacey Kawabata
Ryu (7th)	Megan Nakagawa & Jory Furukawa
Tsuru (8th)	Shelby Tsudama & Kimberly Yamaguchi

INTROS | SEMPAI

Cooking (Lower)	Jessica Furumasu & Kaila Nishikawa
Cooking (Upper)	Yumi Bellon & Summer Yokota
Program	Hana Bryant, Lauren Hamasaki, Sara Ho, Evan Itow, Jarett Nishikawa & Tyler Sato

DAILY SCHEDULE



❖ 8:30am - 8:45am

❖ 8:45am

❖ Snack Periods

❖ Lunch

❖ 1:00pm - 3:00pm

❖ 3:15pm - 4:00pm

❖ 4:00pm

❖ 4:00pm - 5:30pm

Taiso

Classes Begin

Staggered (1st-6th)

Staggered (1st-8th)

Specialty Classes

Afternoon Demonstrations

Checkout

Extended Care (optional)

PARENT PARTICIPATION

- ❖ Maintenance I & II
 - ❖ Saturday, June 15th at 9am
 - ❖ Saturday, June 29th at 9am
 - ❖ Alternative:
Chicken Cleaning (Wed, May 15th from 6:00-8:30pm)
- ❖ Committees will meet right after this meeting!



PARENT PARTICIPATION

- ❖ Classroom Work Day
 - ❖ 8:15am - 4:15pm
 - ❖ Bring lunch for you
 - ❖ Be an active participant!
 - ❖ Corporate Matching

PLEASE NOTE: If you are not currently assigned to a classroom work day and did not opt-in for the buy-out, please re-sign up for a day!

PARENT PARTICIPATION

- ❖ MVBT Obon Bingo Booth
 - ❖ July 20th & 21st, 2019
 - ❖ Set up, Caller, Announcer, Table Runners, Prize Runners



SESSION POLICIES

- ❖ Nut Free Campus
- ❖ The “Rule of 3”
- ❖ No Cell Phones & Electronics Usage
- ❖ Afternoon Extended Care
 - ❖ Pack an extra snack!
 - ❖ Escorted to gym after 4pm
 - ❖ Remain there until 5:30pm
 - ❖ \$5/every 5 minutes after 5:35pm



STAYING INFORMED

- ❖ Handbook available online
- ❖ Website & Email for documents
- ❖ Mid-Session update from Sensei
- ❖ Afternoon Demonstration schedule
- ❖ Field Trip schedule



KEY DATES | GENERAL SESSION INFO

- ❖ Tuesday, June 18th: PICTURE DAY!

 - ❖ Wear your shirts!

- ❖ Fundraisers

 - ❖ Fridays, June 21st & June 28th - Kona Ice Truck

 - ❖ To be Announced: Armadillo Willy's & Chipotle

 - ❖ LabelDaddy.com - Code: nakayoshigakko

KEY DATES | FIELD TRIPS

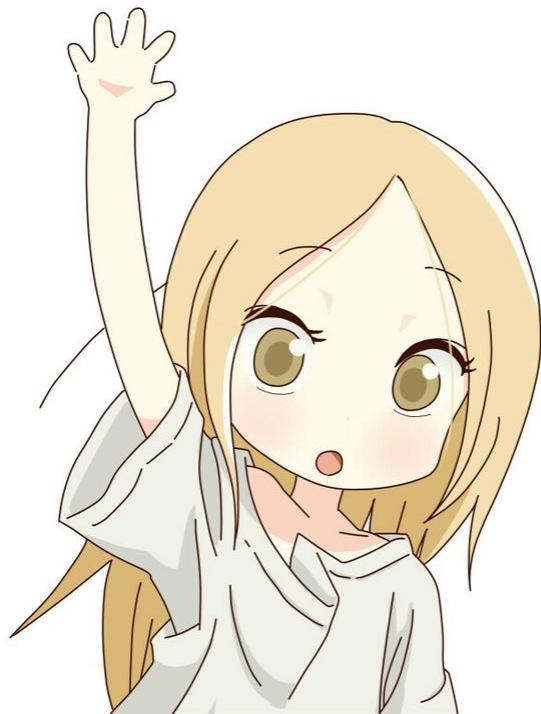
Kuma (3rd)	Hakone Gardens (TBD)
Zou (4th)	NBC Studio Tour (TBD)
Kirin (5th)	Fri, 6/21 - JAMSJ & Walking Tour
Tora (6th)	(TBD)
Ryu (7th)	NBC Studio Tour (TBD)
Tsuru (8th)	Fri, 6/21 - USS Hornet

- ❖ Need drivers for Kuma-Ryu classes, Tsuru will have a chartered bus
- ❖ Permission slips (for children & drivers)
- ❖ Remember to wear Nakayoshi Gakko T-Shirts

GENTLE REMINDERS

- ❖ Use our registration system (Jackrabbit) to update any allergy information, pick-up authorizations or emergency contact info
- ❖ All medical necessities need to be clearly labeled and stored in the Office
- ❖ Early sign-out will require a permission slip from the Office

ANY QUESTIONS?



AND LASTLY...

Enjoy an Evening of Music and Heritage with

The Minidoka Swing Band

In a first-time collaboration with
Mountain View's own Jun Daiko!

Sunday, May 19, 2019

Doors Open: 6:30pm

Showtime: 7:00-9:00pm

Tickets: \$25/person available online at

www.sanjosejacl.org/minidoka

Proceeds benefit the National JACL's Educational Programs.



AND...



APPENDIX

The background of the slide is white with abstract purple geometric shapes on the right side. These shapes include overlapping triangles and polygons in various shades of purple, from light lavender to deep magenta. A thin, light grey line runs diagonally across the white area, starting from the bottom left and extending towards the top right.

NG BOARD STRUCTURE

